

▶ SF₆ ANALYSER

ALY101-05

DESCRIPTION

- Up to **3 different measurable parameters** to verify the purity of the gas according to the CEI EN 60480: SF₆, SO₂ and dew-point
- **Accurate and quick analysis**
- **Downloadable data** on USB stick
- The **absence of SF₆ gas leaks** is guaranteed by a closed-loop system
- Special **flexible bag** for gas storage

- Internal **rechargeable battery** for different analyses with a single charge
- Analysed gas stored inside the analyser can be returned to the compartment through the **pump-back function** or the device can be used as an analysis tool for a **continuous flow**



TECHNICAL SPECIFICATIONS

⚙️ DIMENSIONS: Length: 428 mm - Width: 555 mm - Height 306 mm

⚙️ WEIGHT: 24 kg

⚙️ LINE VOLTAGE FOR CHARGING: 100-240 Vac 50/60 Hz

⚙️ MAX OUTLET PRESSURE DURING PUMP-BACK FUNCTION: 10 barg

⚙️ MAX INLET PRESSURE: 35 barg

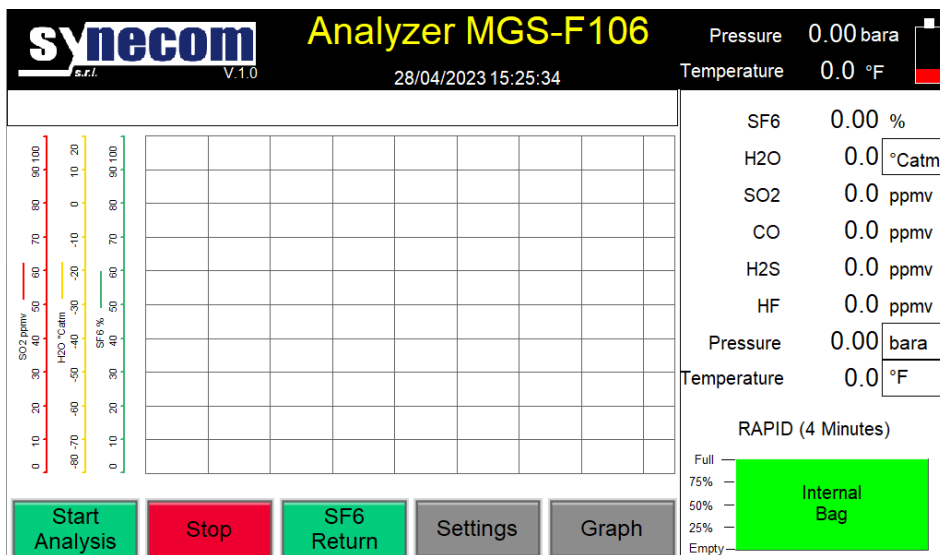
⚙️ MIN INLET PRESSURE: 1,2 barA (0,2 barG)

⚙️ DATA OUTPUT: via USB memory stick

⚙️ DISPLAY: 10.1" TFT



► **SF₆ ANALYSER**
ALY101-05



STANDARD EQUIPMENT

SF₆ sensor (infrared)
 NDIR technology
 Resolution: 0,01 Vol.%
 Accuracy: ± 0,5 Vol.%

Dew-point sensor
 Measuring range: -80°C ... +20°C
 Accuracy: ± 2°C from +20°C to -40°C
 ± 3°C from -40 to -60° C

SO₂ sensor (electrochemical)
 Nominal range: 0-100 ppm*
 Resolution: <0.1 ppm
 Accuracy: ± 2%
 Longterm stability: < 2% per month

*also available 0-20 ppm, 0-500 ppm, 0-2000 ppm

Storage temperature: -10° ÷ +60°C
 Operating temperature: -10°C ÷ +50°C

Connection: DN20 Synecom valve - quick coupler

Connection: DN8 Synecom valve - quick coupler

6 m hose with quick couplings

Transport case



▶ **SF₆ ANALYSER**
ALY101-05

OPTIONAL ACCESSORIES

- ☆ **ALY104-01:** Gas recovery bag
- ☆ **ALY103-01:** Pressure reducer for gas analysis in cylinders
- ☆ **TBS105-02:** 4m hose for analysis
- ☆ **VAL102-01:** DN8 SF₆ Adapter Kit
- ☆ **VAL103-01:** DN20 SF₆ Adapter Kit

CERTIFICATES ISSUED

- 📄 Certificate of CE conformity
- 📄 Certificate of calibration for sensors
- 📄 Helium Leak Test Certificate (performed by qualified technicians UNI EN ISO 9712 - SNT TC1A)

PROVIDED DOCUMENTS

- 📄 Operating Manual

